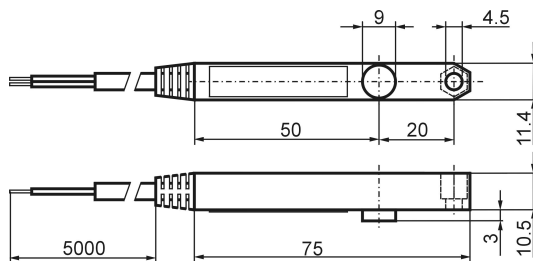
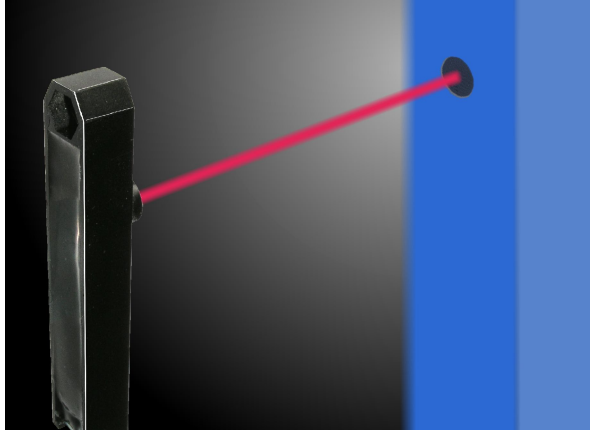


ELS 260 record light barrier

High quality light barrier with patented automatic range compensation, only available for record door operators in single or dual configuration, proved technology, easy to integrate with record profile system



Technical data	
Range	max. 6 m
Electrical connection	15 ... 30 VDC
Light source	pulsed infrared
Ambient light	max. 100'000 Lux
Optical aperture angle emitter	± 20°
Optical aperture angle receiver	± 10°
Output	record interface
Temperature range	- 20 ... + 60 °C
Wire length	5 m (two-wire line)
Protection class	IP67/IP65 (plug version)
Approvals	CE

Included in delivery:

- Mounting set ELS 260, consisting of emitter and receiver	260.000.000
	260.001.000 Sensor light barrier SEK (emitter)
	260.002.000 Sensor light barrier EMK (receiver)

Versions and optional accessories:

Mounting set ELS 260, pluggable	260.100.000
Safety switching unit 260 SAG for 4 additional light barriers	260.010.000
Aluminium cover plate conceals ELS mounting, front view, 20 mm	245.000.002

Advantages

- automatic **range compensation** (self-calibrating)
- very **easy to install**
- **compact dimensions**
- **resistant to ambient light**
- aesthetic **integration** with **record profile system**
- **reasonably priced**

Safety and comfort on automatic door systems...

Application

The light barrier monitors the door closing area, preventing people from becoming trapped.

- available in single and dual configurations for maximum versatility
- additional equipment for extensions or to generate an opening pulse for door activation

Benefits to the customer

- safety and comfort
- integrated controller in record-door control units
- pluggable variant, quick exchangeable
- excellent price-/performance ratio