

SEALCORD & CLEANCORD

Special Solutions

Maintenance

Centralised monitoring

Security

Drive technology for pedestrian entrances and industrial applications



- Hygienic ●
- Innovative ●
- Quite operation ●

Hygienic, hermetically sealed entrances for hospitals and clean rooms

For all rooms requiring high standards of hygiene.

Choose record SEALCORD, the hermetically sealed sliding door or CLEANCORD, the stylish and attractive stainless steel sliding door.

Both automatic sliding doors are built as a modular system and can be adapted to customers requirements.



record

your global partner for entrance solutions



The highest hygiene standards everywhere

Special doors from record for specific requirements



The **record CLEANCORD** and **SEALCORD** door systems provide solutions for environments with special hygiene requirements. The seamless surface design stops particulate dirt and germs from accumulating, and the proven record operating system is reliable, practically silent and user-friendly. The benefits are that you have surfaces that are easy to keep hygienically clean, controlled air exchange and eliminating the entry of foreign particles. Other benefits are energy saving qualities and user friendliness, as well as intuitive door automation. These doors have been developed for use in operating theatres/clinics/research laboratories/ production of pharmaceuticals/clean rooms for food production and rooms used for quarantine or dangerous diseases.

Hermetic sealing

For zones requiring the highest standards, record provides the **SEALCORD** sliding door capable of creating an airtight seal up to 100Pa. This model provides a hermetically sealed barrier between clean zones and other areas, as required in conditions of quarantine. The **SEALCORD** door leaf is available in a smooth, seamless HPL plastic or stainless steel finish, lined with radiation protection. The system uses an automatic push and go operation with two optional opening widths, one for staff and the other for beds. The options include a program selector with a clear text display. The door leaf contains an observation window together with a built-in electric blind that incorporates a radiation and laser protection.

Hygienic

The **record CLEANCORD** is a stainless steel automatic sliding door, designed to separate two clean zones, for example operating theatre and post operation areas. The entire construction of the door and operator are finished in stainless steel or with customer requirements, the doors may also be finished in colourful plastic, to brighten up interiors. Special mention should be made of the exceptionally quiet operation and elegant design.



→ automatic push and go function



→ Hygiene switch

→ Attractive stainless steel sliding door



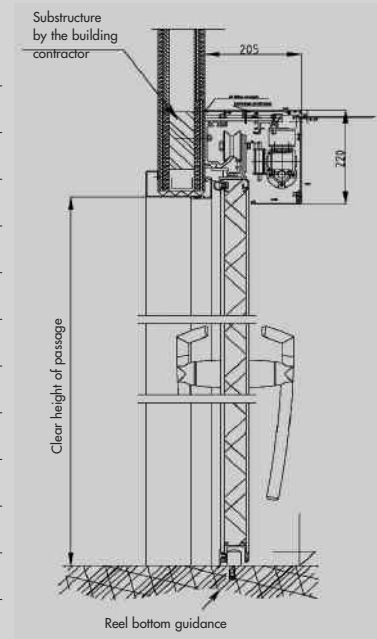
→The new control unit with illuminated graphic display





Technical specifications

	CLEANCORD (stainless steel cladding)	SEALCORD (air tight door)
Opening width for one or two-leaf model	E-STA: 600 - 3000 mm D-STA: 800 - 3000 mm	E-STA: 600 - 2100 mm Two-leaf model available on request
Door leaf weight max.	2x 125 kg or 1x 200 kg	1 x 200 kg
Door operating speed	Adjustable to approx. 0.6m/s	
Height of passage	Up to 3000 mm	Up to 2800 mm
Operator housing dimensions	165 / 98 mm	200 / 205 mm
Mains voltage	230V/50/60Hz	
Stainless steel door leaf	V2A (stainless steel quality)	
Optional plastic door covers	Available in many colours (standard RAL colours)	
Sealing capability	-	100 Pa. (measurable leakage <0.2m ³)
Radiation protection lining	optional lining can be inserted within the door leaf	
Basic functions	Total opening (bed access, programmable hold open times)	
	Partial opening (staff access, programmable hold open times)	
Continuously open, manual control, automatic reverse, push & go function		



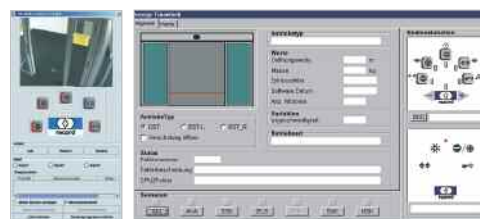
Options

- BDE-D remote program selector with clear text display
- Battery for emergency operation in power failure
- Security and safety sensors
- Trigger devices: radar/infrared detectors, touch free or foot operated buttons
- Laser-proof protective glass with built-in electrical blinds
- Retrofitted manual doors to automatic systems (CLEANCORD system)



Central monitoring

record Advanced Door Management (ADM) This system controls and monitors all automatic doors, and dispatches status messages to a central control point. Doors connected to **ADM** can be integrated into existing building control systems. The **ADM** system brings you the pinnacle of door control technology.



→ Screen view



www.agta-record.com

Near the customer and rapidly available via the service network

Record service technicians attend regular training courses and guarantee reliable, high quality maintenance, which also preserves the long-term value of your installation. Diagnosis and intervention from a remote site or troubleshooting on-site: **record service is always in your proximity.**



Personal consulting | Professional assembly and commissioning | Professional maintenance | Hotline for rapid troubleshooting | Guarantee of long-term functionality

→ **record UK Limited**

Head Office: Garrion Business Park, Smith Avenue – Wishaw, ML2 0RY – Tel.: 01698 376411 – Fax: 01698 376422

Central Office: 450a Bradford Road – Batley, WF17 5LW – Tel.: 01924 471801 – Fax: 01924 471828

Southern Office: 17 Invincible Road – Farnborough, GU14 7QU – Tel.: 01252 701040 – Fax: 01252 516307

www.recorduk.co.uk – info@recorduk.co.uk



→ **Headquarters**

agta record ltd – Allmendstrasse 24 – CH-8320 Fehraltorf

Tel.: +41 44 954 91 91 – e-mail: info@agta-record.com



www.agta-record.com



record

your global partner for entrance solutions